

Technical Parameter

Type	iReal 2E	
Light source	Category	Infrared VCSEL structured light
	Visibility	Invisible
	Safety	CLASS I (eye-safe)
	Technology	Infrared linear-array structured light
	Color reproduction	24 bit
Scanning features	Alignment mode without markers	Texture/feature/mixed alignments
	Human body scanning	Invisible light/hair/dark environment scanning; automatically remove the layers of body shaking
	Medium/large-sized object	Optimal scanning distance 350 mm ~ 650 mm
		Effective working range 250 mm ~ 1000 mm
Measurement rate	Maximum	1,500,000 points/s
Detail	Point distance	0.200 mm ~ 3 mm
Accuracy	Point accuracy (single frame)	Up to 0.100 mm
	Alignment accuracy	Up to 0.300 mm/m
Data output	Output formats	OBJ, STL, PLY, ASC, SK
	3D printing	Support
Hardware	Work temperature	5°C ~ 40°C
	Interface mode	USB 3.0
	Weight	850 g
	Dimensions	140 mm × 94 mm × 258 mm
	Configuration	3 sets of invisible light sources; 3 camera groups; 3 sets of auxiliary lights

SCANTECH™

I REAL 2E Color 3D Scanner



Expanded Vision for Effortless Smooth

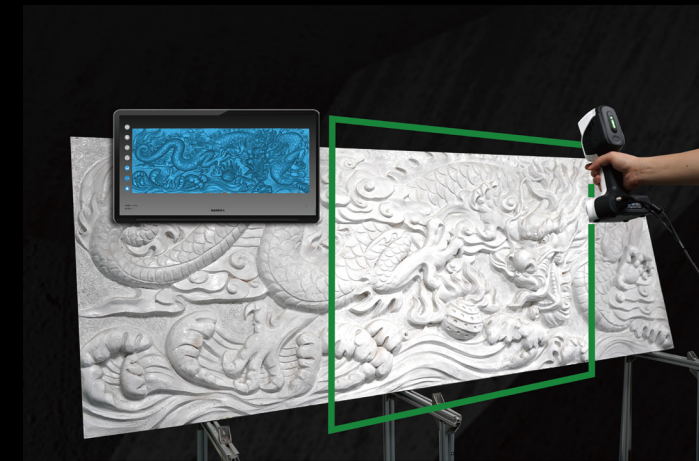
iReal 2E color 3D scanner maximizes the performance in depth of field, scanning area, algorithm, texture reproduction and detail capturing, specially designed for medium to large-sized objects and human body 3D scanning.

iReal 2E adopts the Infrared VCSEL structured light technology to bring you the safest and most comfortable 3D scanning experience. Without attaching markers, a quick texture capturing and geometry acquisition can be achieved. Mixed alignment modes meet various scanning situations.

With the advantages of cutting-edge algorithm functions, easy-to-use software, ergonomic design, portable and durable, iReal 2E creates an efficient, accurate and rich texture 3D color measurement solution.

Effortless Smooth

Flexible and smooth 3D scanning at medium to large-sized objects due to 850 mm x 800 mm scanning area and 750 mm depth of field.



Super HD Texture Capturing

With its HD color reproduction, iReal 2E deeply fulfills the visual experience of texture capturing in various fields.



Invisible Light 3D Experience

Infrared VCSEL structured light brings you the safest and most comfortable 3D scanning experience, eliminating the issues of dazzling lights and difficulty of hair scanning.



Optimized Algorithm

Rapid texture capturing and geometry acquisition without markers; strengthen the ability of capturing reflective textures; mixed alignment modes meet various scanning situations.



Human Body
Medical field, body part customization, 3D printing portrait, body art

Digital Sculpture
Stone/wood carving, clay/urban sculpture, statue of cultural relics

Texture Acquisition
Culture relics digitalization, furniture online display, VR/AR rapid modeling, e-commerce 3D display

Industry/Art Design
University reverse design training, 3D printing, vehicle redesign, movie props