

# AUTOSCAN-T 3D System

## Unmanned Automatic 3D Inspection Solution



### Technical Parameter

Type	TrackScan-P42	
Scan mode	Ultra-fast scanning	17 blue laser crosses
	Hyperfine mode B	7 blue parallel laser lines
	Deep hole scanning	1 extra blue laser line
Laser lines in total	42	
Accuracy	0.025 mm	
Measurement rate	1,900,000 measurements/s	
Scanning area	310 mm × 350 mm	
Laser class	Class II (eye-safe)	
Resolution	0.020 mm	
Volumetric accuracy	10.4 m <sup>3</sup>	0.064 mm
	18.0 m <sup>3</sup>	0.078 mm
Volumetric accuracy <small>(With MSCAN-L15 photogrammetry system)</small>	0.044 mm + 0.015 mm/m	
Portable CMM T-Probe	Optional	Support
	Single point repeatability	0.030 mm
Part size range <small>(recommended)</small>	200 ~ 6000 mm	
Stand-off distance	300 mm	
Depth of field	320 mm	
Output formats	.stl, .ply, .obj, .igs, .wrl, .xyz, .dae, .fbx, .ma, .asc or customized	
Operating temperature range	-10°C ~ 40°C	
Interface mode	USB 3.0	
Patents	CN204329903U, CN104501740B, CN104165600B, CN204988183U, CN204854633U, CN204944431U, CN204902788U, CN105068384B, CN105049664B, CN204902784U, CN204963812U, CN204902785U, CN204902790U, CN106403845B, CN209197685U, CN209263911U, CN106500627B, CN106500628B, CN206132003U, CN211121096U, US10309770B2, KR102096806B1	

SCANTECH™

## TRACKSCAN 3D System

### Intelligent 3D Tracking With Unrivaled-fast Measurement



**SCANTECH (HANGZHOU) CO., LTD**  
 Building 12, No.998, Wenyi West Road, Yuhang District, Hangzhou,  
 Zhejiang Province, China  
 Tel: 0086-571-85852597 Fax: 0086-571-85370381  
 E-mail : info@3d-scantech.com  
 Website : www.3d-scantech.com

SCANTECH™

Authorized Distributor

Copyright ©

SCANTECH (HANGZHOU) CO., LTD





# TRACKSCAN

TrackScan-P42 3D system adopts intelligent optical tracking measurement technology and high-quality optical equipment. It carries out ultra-high precision dynamic 3D measurement without markers. This 3D system is widely applied to quality control, product development, reverse engineering, etc.

By freely switching multiple working modes, TrackScan-P42 caters to different scanning situations. 17 crossed blue laser lines enable ultra-fast scanning rate of 1,900,000 measurements/s and smooth experience. 7 parallel blue laser lines work for detail capturing. Single blue laser line aims to fast collecting 3D data of deep holes and dead angle positions.

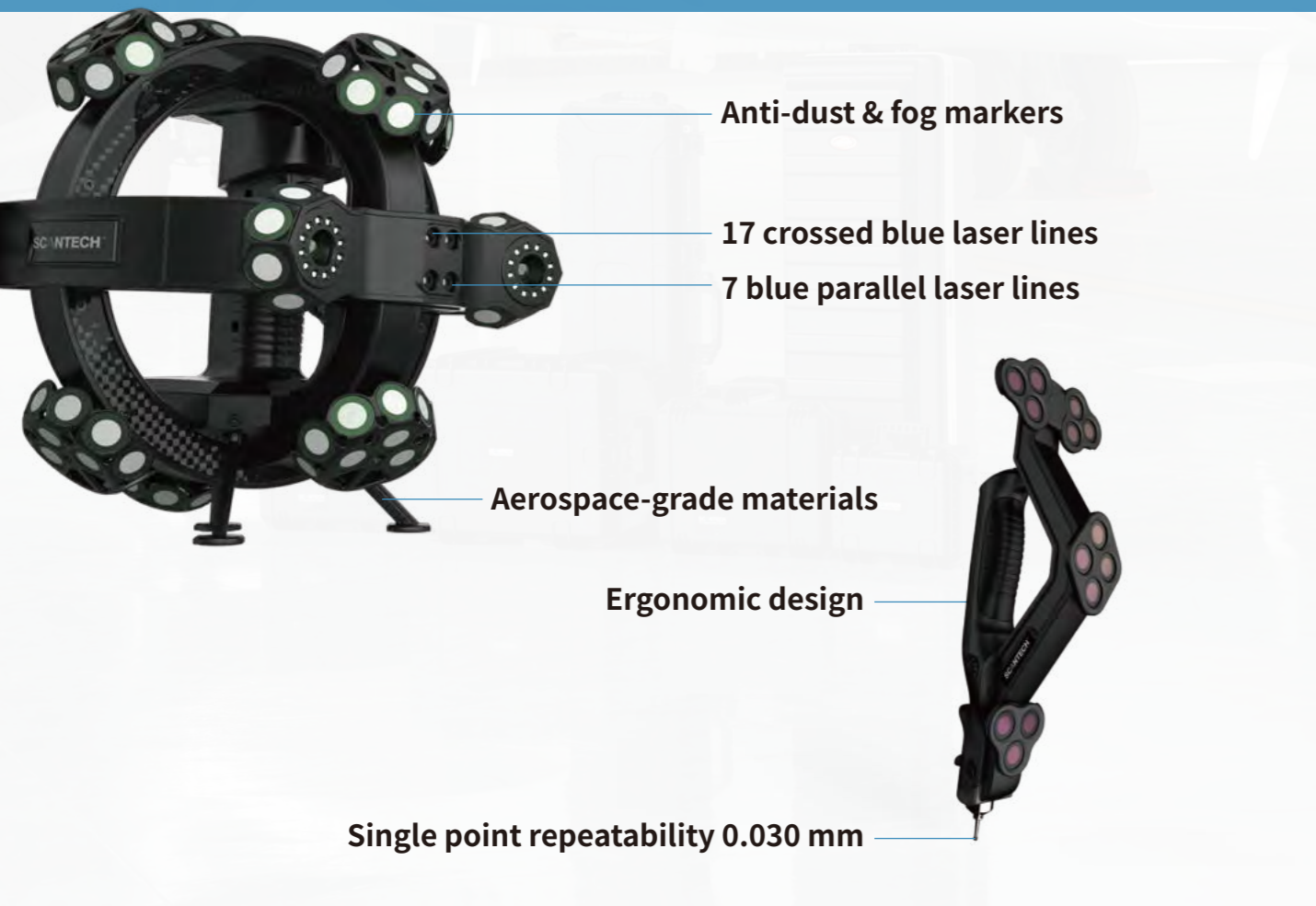
The equipped wireless portable CMM T-Probe delivers flexible measurement, and precisely captures high-precision 3D data of gaps, hole positions, grooves and complex surface. By working with robot-arm, TrackScan-P42 can also realize intelligent online automated 3D inspection.



**Strong Anti-interference Capability**  
Easily capture 3D data for shiny and black surface; strong anti-interference capability of environment, vibrations and thermal variations.



**Accurate Composite Positioning**  
TrackScan-P42 supports modes of camera tracking and marker tracking. In the blind area of E-Track, the scanner can recognize the markers to keep working.



Anti-dust & fog markers

17 crossed blue laser lines

7 blue parallel laser lines

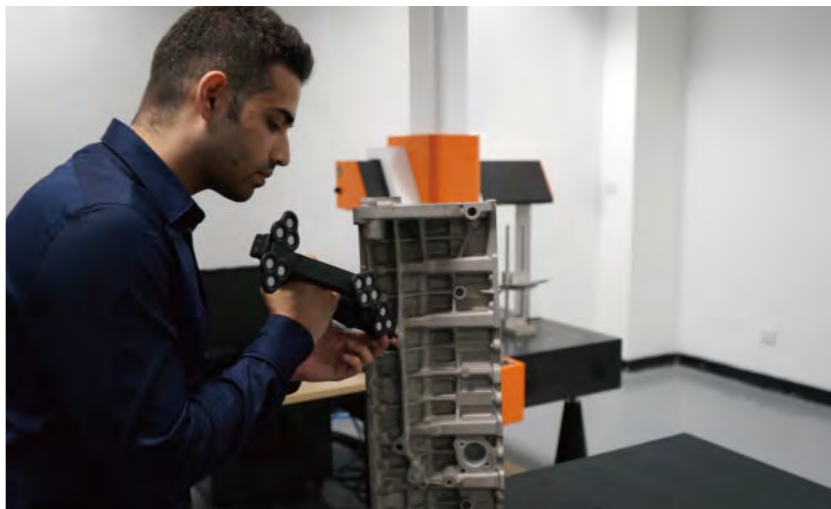
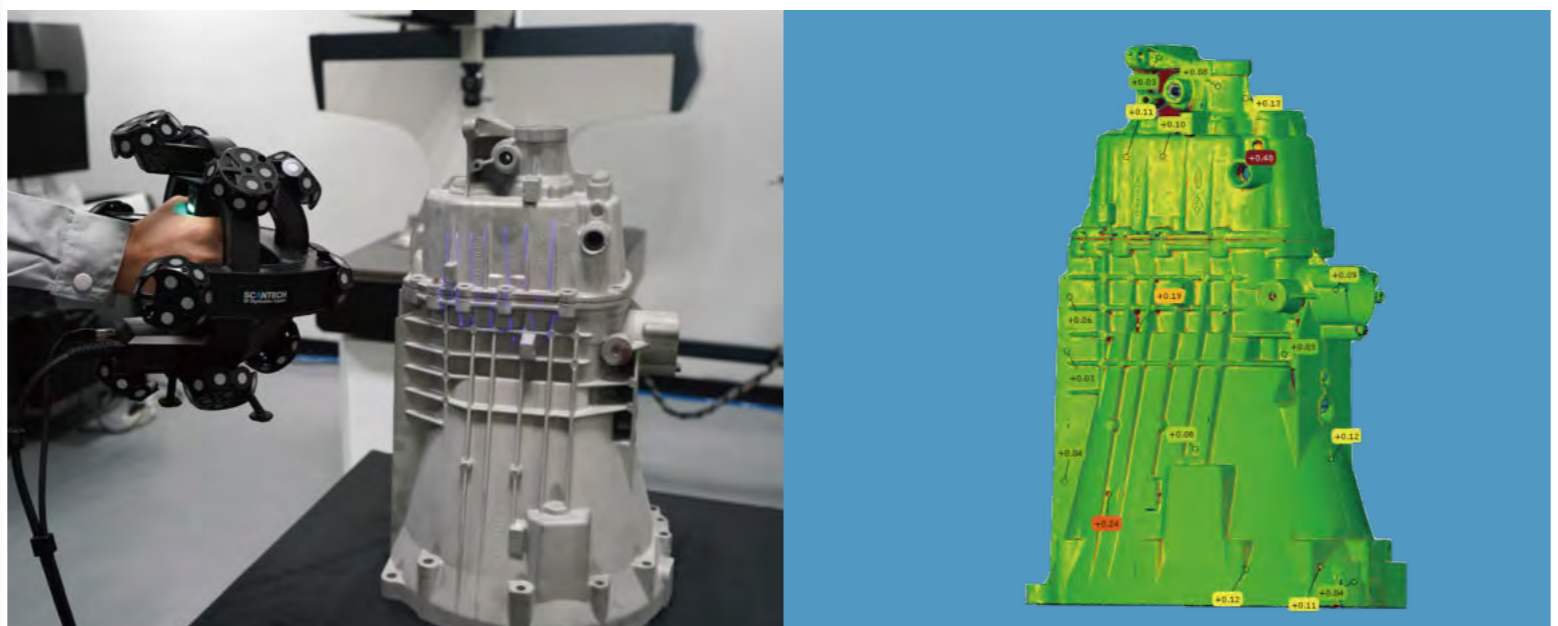
Aerospace-grade materials

Ergonomic design

Single point repeatability 0.030 mm

**Intelligent Tracking Without Markers**  
With intelligent optical tracking measurement, TrackScan-P42 3D system delivers instant scanning without markers, greatly improving work efficiency and decreasing cost.

**Unrivaled-fast & Detail-maker**  
17 crossed blue laser lines enable ultra-fast scanning rate of 1,900,000 measurements/s and smooth experience. 7 parallel blue laser lines work for detail capturing. Single blue laser line aims to fast obtain 3D data of deep holes and dead angle positions.



**Wireless Portable CMM**  
Portable CMM T-Probe is designed for getting precise 3D data of holes and hidden points, with high single point repeatability of 0.030 mm.



**Extendable Measuring Volume**  
Measuring range is dynamically extended by adjusting the positions of E-Track, meanwhile the accuracy still gets maintained.